

# LIFFEY MEETING ROOM 3

## ROOM SPECIFICATIONS

Size	79m <sup>2</sup>
Minimum height	3.25m
Maximum height	3.25m
AV control room	0
Divisible	Yes
Windows	Yes
Hanging Points	No

## ROOM CAPACITIES

Boardroom	32
Theatre	101
Banqueting*	60
Cabaret	42
Classroom	36

## TECHNICAL PACKAGE

WiFi	Yes
AV	Yes
Stage	On request
Sound	Yes
Lights	On request

## ABOUT THE ROOM

Located on Level 1, large windows flood this meeting room with natural light and give wonderful views of Dublin's skyline. Offering a great degree of flexibility, this room also divides into Liffey Meeting Room 3a and Liffey Meeting Room 3b.

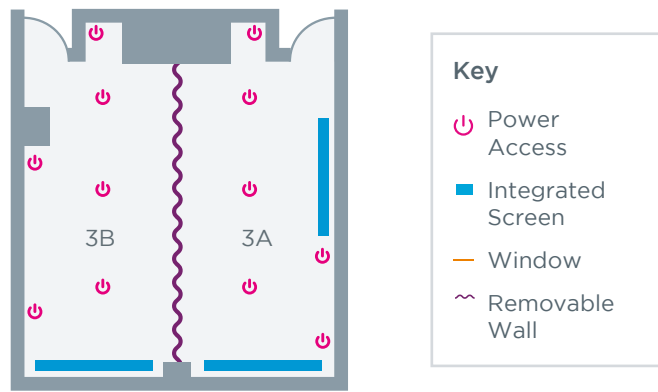
All our meeting rooms come complete with high-spec integrated screens and projectors, together with multiple power points for laptops. Each meeting room also has its own control panel giving you the ability to adjust the room's lighting and pull down blackout or sun-blinds without having to call for assistance.

Offering the perfect setting for board meetings, training sessions, interviews, supplier meetings and private banquets, this room is also ideal for hosting break-out sessions at larger events.

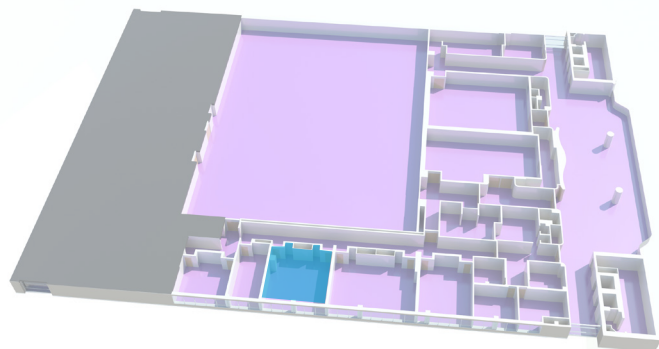
## ROOM VIEW



## ROOM PLAN



## FLOOR PLAN - LEVEL 1



### PLEASE NOTE

You may need additional Wi-Fi and power depending on your event's requirements. Your Event or Technical Production Manager will be happy to provide you with recommendations and quotes. This floor plan is to be used as a guide only, please contact your Event or Technical Production Manager for more detailed information and plans.

\*Banqueting capacities are based on oval tables of ten without a stage.