

WICKLOW HALL 2

ROOM SPECIFICATIONS

Size	425m ²
Minimum height	3.2m
Maximum height	4.3m
AV control room	2
Divisible	Yes
Windows	No
Hanging Points	Yes

ROOM CAPACITIES

Boardroom	120
Theatre	500
Banqueting*	350
Cabaret	200
Classroom	230

TECHNICAL PACKAGE

WiFi	Yes
AV	Yes
Stage	Yes
Sound	Yes
Lights	Yes

ABOUT THE ROOM

Our largest hall on level 2, Wicklow Hall 2 offers 425m² of flat-floored space. Finished to the highest standards, this hall comes complete with two AV control rooms and state-of-the-art equipment.

Our two commercial vehicle lifts, capable of taking vans and 40ft trucks, allow all your production equipment and exhibition stands to be brought effortlessly into this second floor hall.

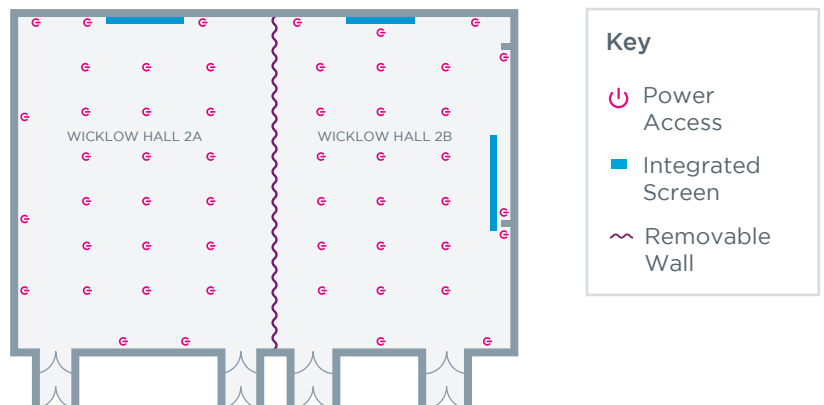
Wicklow Hall 2 opens out onto a fabulous light-flooded foyer, and can welcome up to 500 delegates to a conference and 350 guests to a banquet.

Adding to its flexibility, this hall can also divide into two smaller multi-functional spaces - Wicklow Hall 2A and Wicklow Hall 2B, each with its own AV control room.

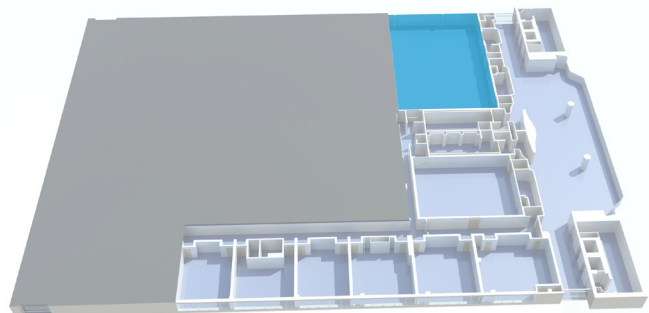
ROOM VIEW



ROOM PLAN



FLOOR PLAN - LEVEL 2



PLEASE NOTE

You may need additional Wi-Fi and power depending on your event's requirements. Your Event or Technical Production Manager will be happy to provide you with recommendations and quotes. This floor plan is to be used as a guide only, please contact your Event or Technical Production Manager for more detailed information and plans.

*Banqueting capacities are based on oval tables of ten without a stage.