

# LIFFEY HALL 1

## ROOM SPECIFICATIONS

Size	174m <sup>2</sup>
Minimum height	3.2m
Maximum height	4.3m
AV control room	1
Divisible	No
Windows	No
Hanging Points	Yes

## ROOM CAPACITIES

Boardroom	68
Theatre	230
Banqueting*	140
Cabaret	90
Classroom	90

## TECHNICAL PACKAGE

WiFi	Yes
AV	Yes
Stage	Yes
Sound	Yes
Lights	Yes

## ABOUT THE ROOM

Liffey Hall 1 offers 174m<sup>2</sup> of flat-floored space. Finished to the highest standards, this hall comes complete with its own AV control room and state-of-the-art equipment.

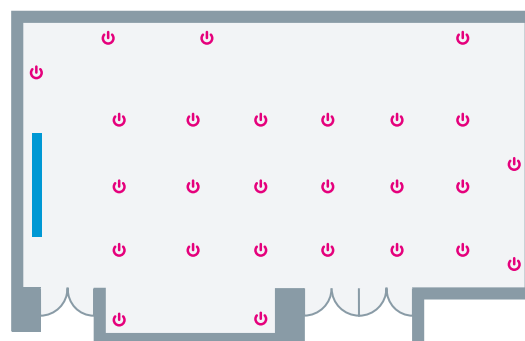
Our two commercial vehicle lifts, capable of taking vans and 40ft trucks, allow all your production equipment and exhibition stands to be brought effortlessly into this first floor hall.

Perfect for smaller conferences, banquets, and exhibitions or even large board meetings, Liffey Hall 1 can welcome up to 230 delegates to a conference and 140 guests to a banquet. Liffey Hall 1 is also within close proximity to a range of boardrooms and meeting rooms.



## ROOM VIEW



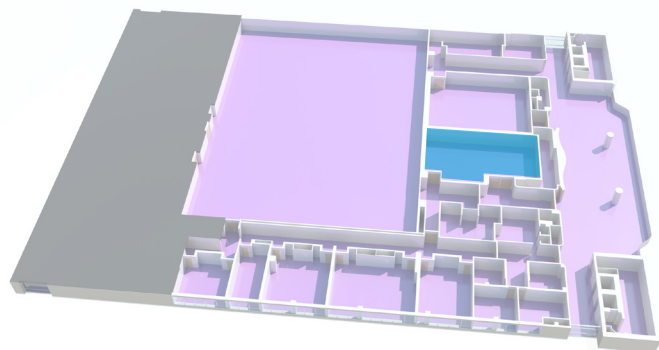
## ROOM PLAN



### Key

-  Power Access
-  Integrated Screen

## FLOOR PLAN - LEVEL 1



### PLEASE NOTE

You may need additional Wi-Fi and power depending on your event's requirements. Your Event or Technical Production Manager will be happy to provide you with recommendations and quotes. This floor plan is to be used as a guide only, please contact your Event or Technical Production Manager for more detailed information and plans.

\*Banqueting capacities are based on oval tables of ten without a stage.