

LIFFEY BOARDROOM 3

ROOM SPECIFICATIONS

Size	32m ²
Minimum height	3.25m
Maximum height	3.25m
AV control room	No
Divisible	No
Windows	Yes
Hanging Points	No

ROOM CAPACITIES

Boardroom	10
-----------	----

TECHNICAL PACKAGE

WiFi	Yes
AV	Yes
Stage	No
Sound	No
Lights	No

ABOUT THE ROOM

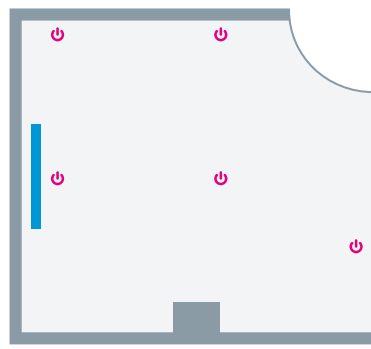
We have four boardrooms located on level 1 within easy reach of our foyers and halls, which make them ideal for hosting break-out sessions at conference events.

Flooded with natural light and featuring comfortable leather chairs, a solid oval wood table and an integrated plasma screen, Liffey Boardroom 3 has a boardroom capacity of ten, and feels remarkably private. It is the perfect setting for an intimate board meeting or private office.




ROOM VIEW



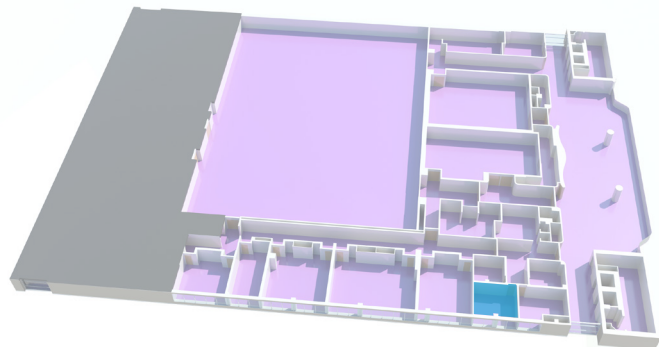
ROOM PLAN



Key

-  Power Access
-  Integrated Screen
-  Window

FLOOR PLAN - LEVEL 1



PLEASE NOTE

You may need additional Wi-Fi and power depending on your event's requirements. Your Event or Technical Production Manager will be happy to provide you with recommendations and quotes. This floor plan is to be used as a guide only, please contact your Event or Technical Production Manager for more detailed information and plans.