

ROOM SPECIFICATIONS

Size	1,650m ²
Minimum height	7m
Maximum height	8m
AV control room	1
Divisible	Yes
Windows	No
Hanging Points	Yes

ROOM CAPACITIES

Theatre	1,806
Banqueting*	1,220
Cabaret	770
Classroom	768

TECHNICAL PACKAGE

WiFi	Yes
AV	Yes
Stage	Yes
Sound	Yes
Lights	Yes

ABOUT THE ROOM

The Liffey is our second largest hall and one of our most flexible spaces, where 1,650m² of flat floored space is surrounded by beautiful wood-panelled walls sourced from sustainable forests.

Our two commercial vehicle lifts, capable of taking vans and 40ft trucks, allow all your production and exhibition equipment to be brought effortlessly into this first floor hall.

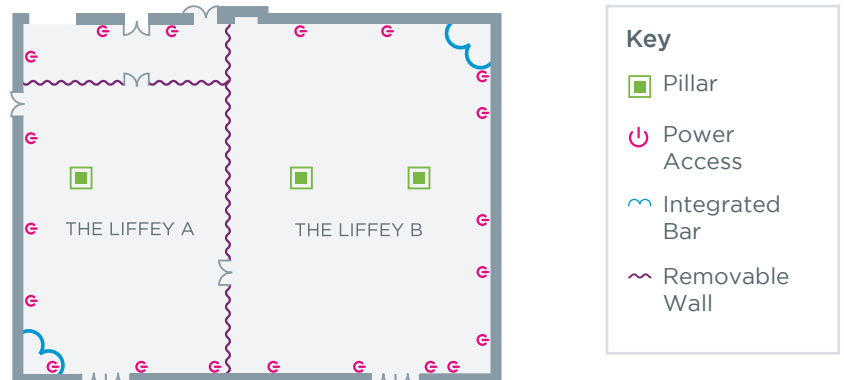
The Liffey's flexibility is enhanced by an innovative Skyfold system that lowers a sound proof wall from the ceiling at the touch of a button, dividing the room into two halls - Liffey A and Liffey B.

Its proximity to our meeting rooms and boardrooms for break-out sessions, makes The Liffey the perfect choice for plenary sessions at association and corporate conferences. It is also an ideal space for product launches, award ceremonies, exhibitions and banquets.

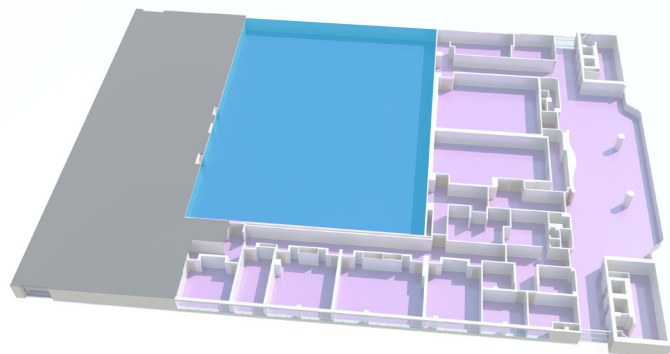
ROOM VIEW



ROOM PLAN



FLOOR PLAN - LEVEL 1



PLEASE NOTE

You may need additional Wi-Fi and power depending on your event's requirements. Your Event or Technical Production Manager will be happy to provide you with recommendations and quotes. This floor plan is to be used as a guide only, please contact your Event or Technical Production Manager for more detailed information and plans.

*Banqueting capacities are based on oval tables of ten without a stage.